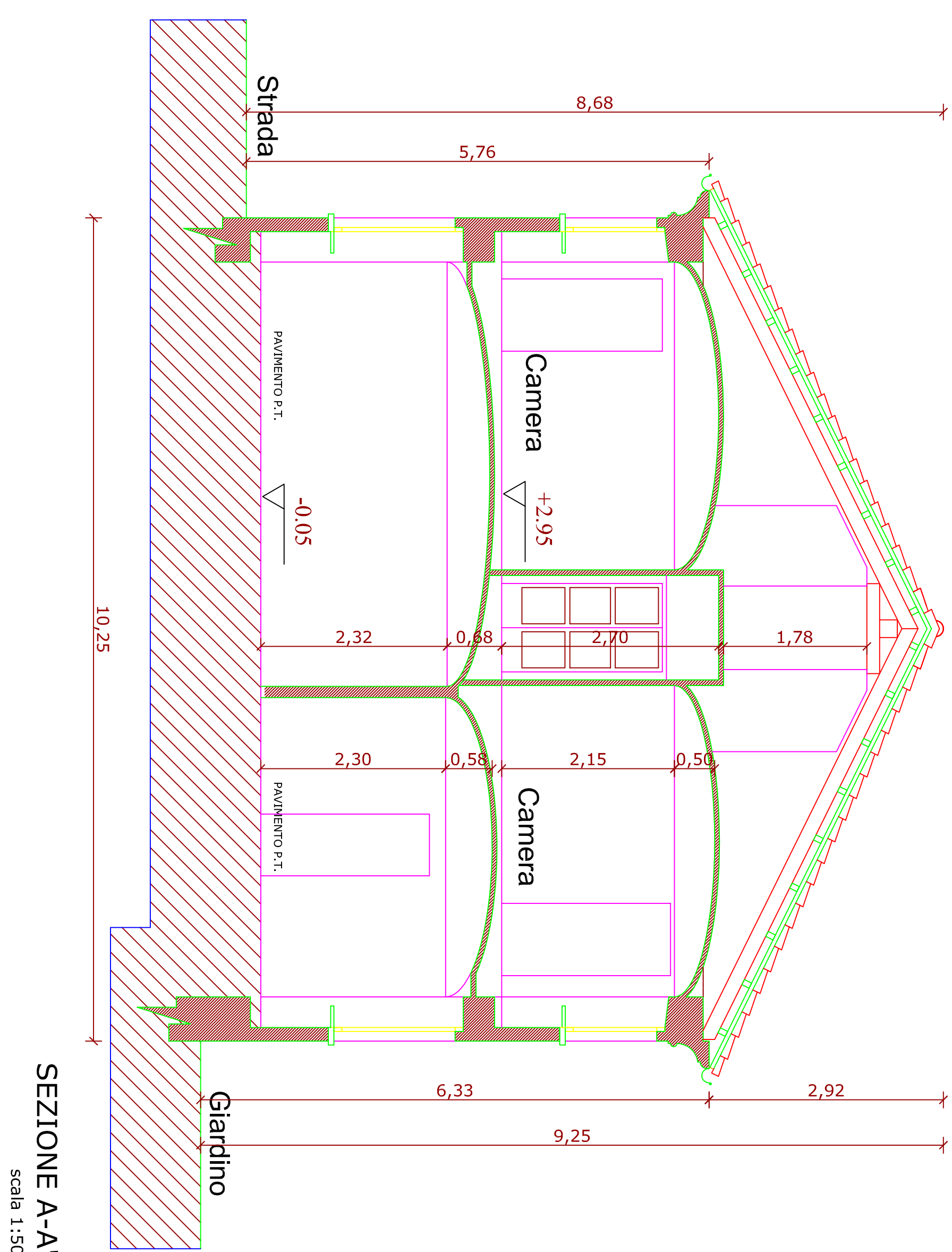
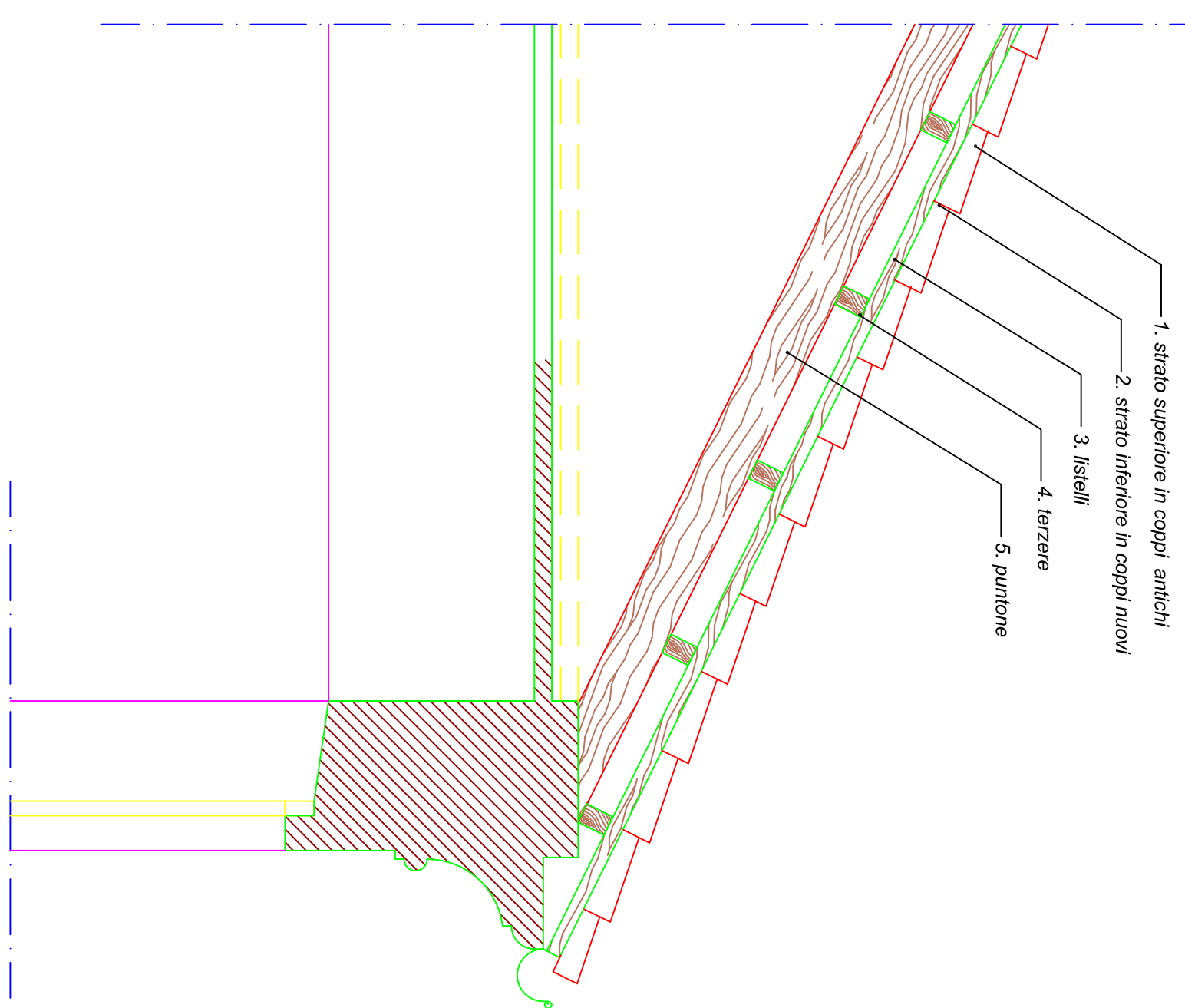
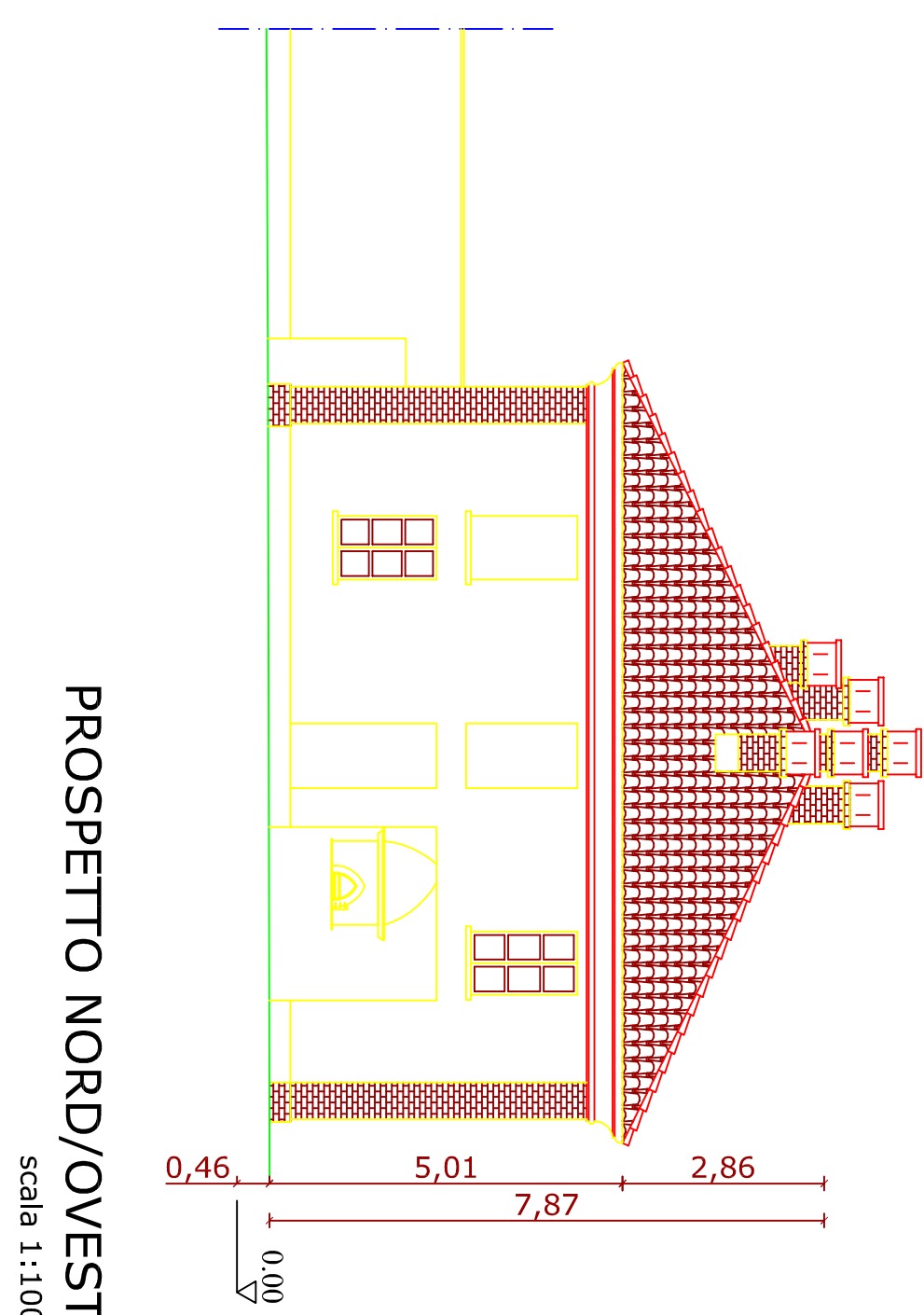
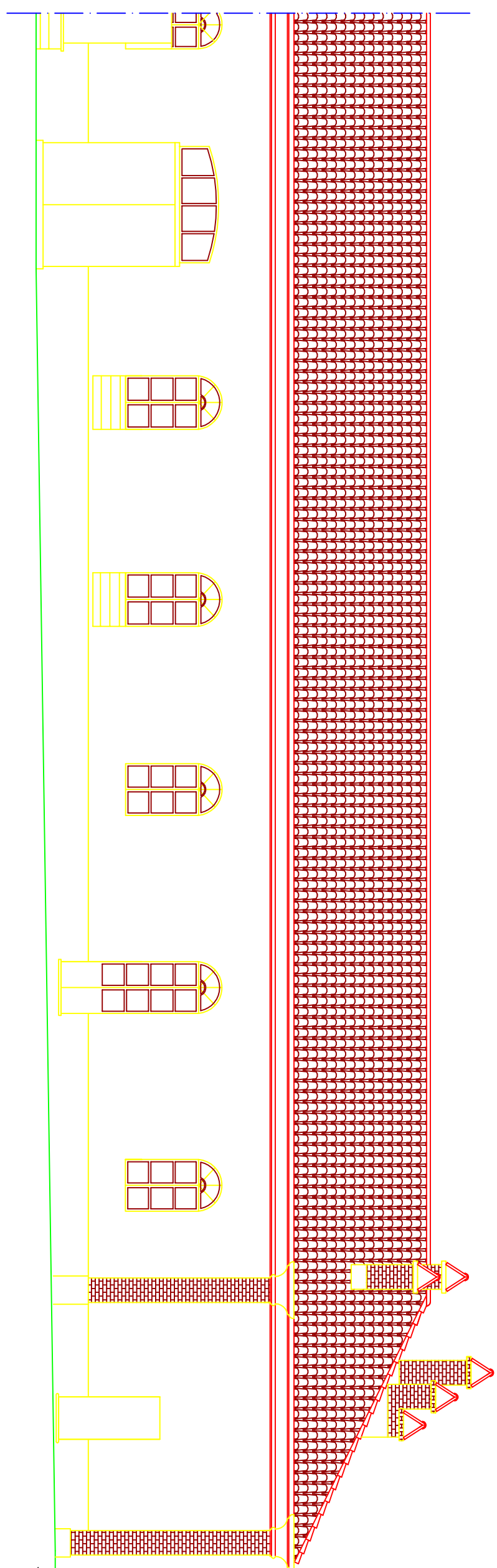
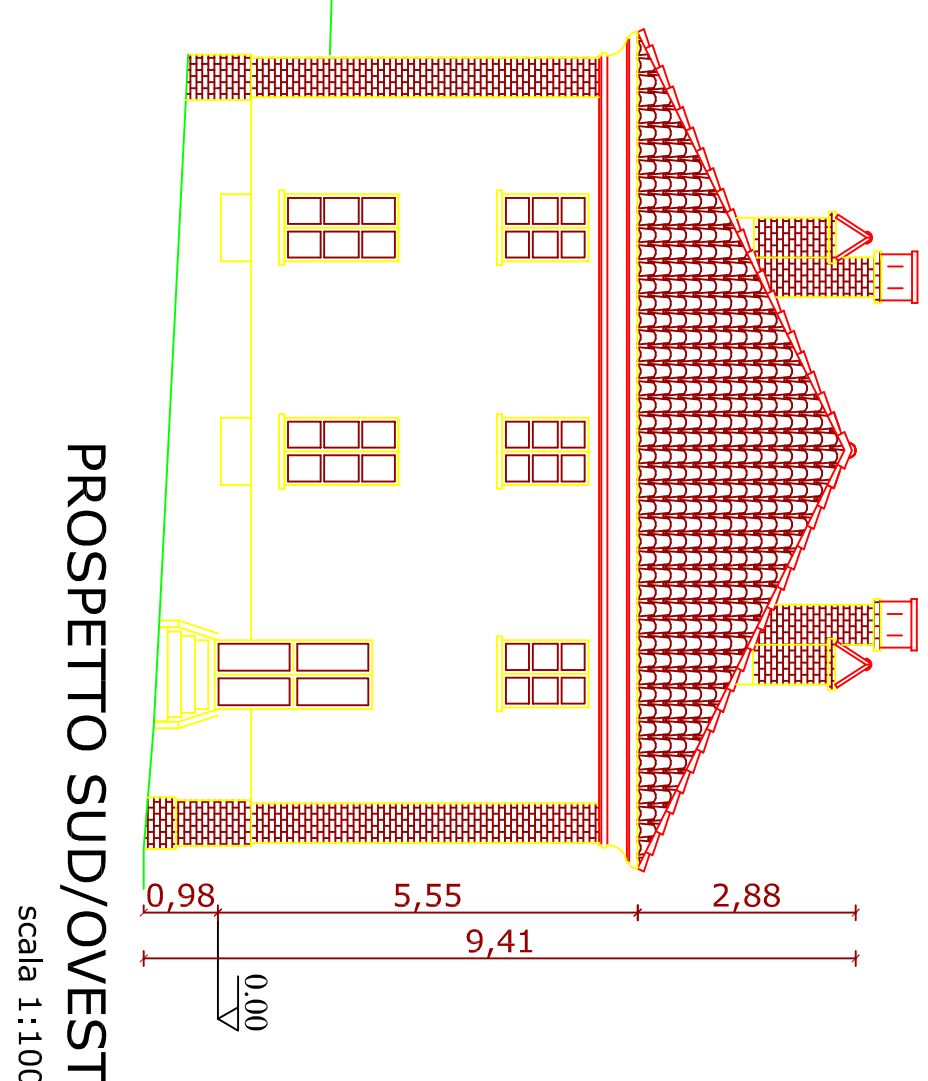
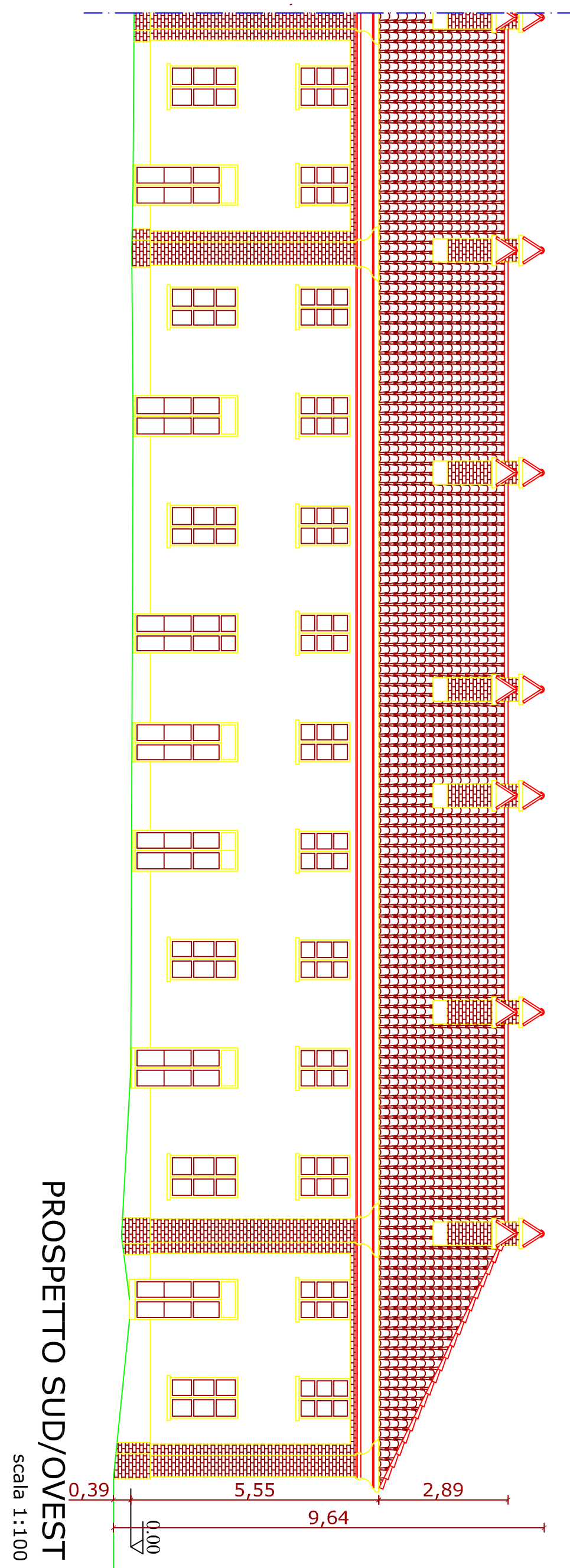
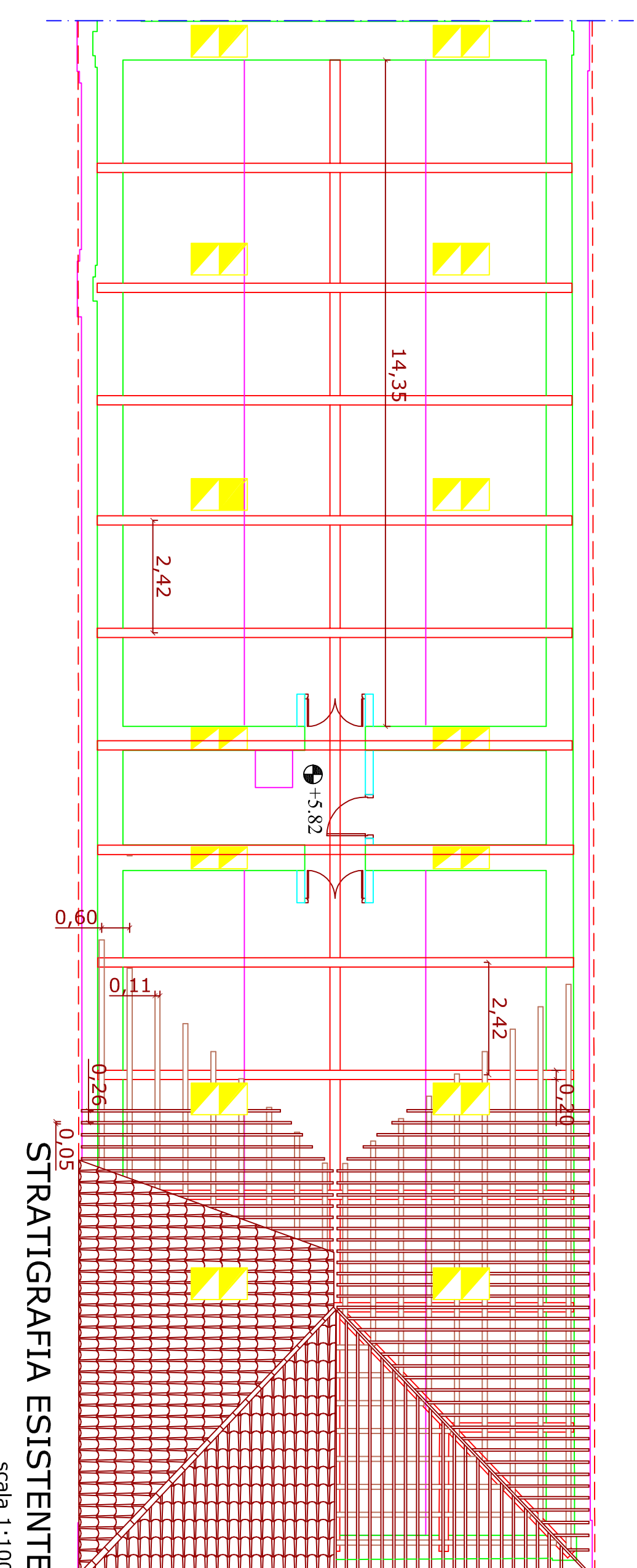
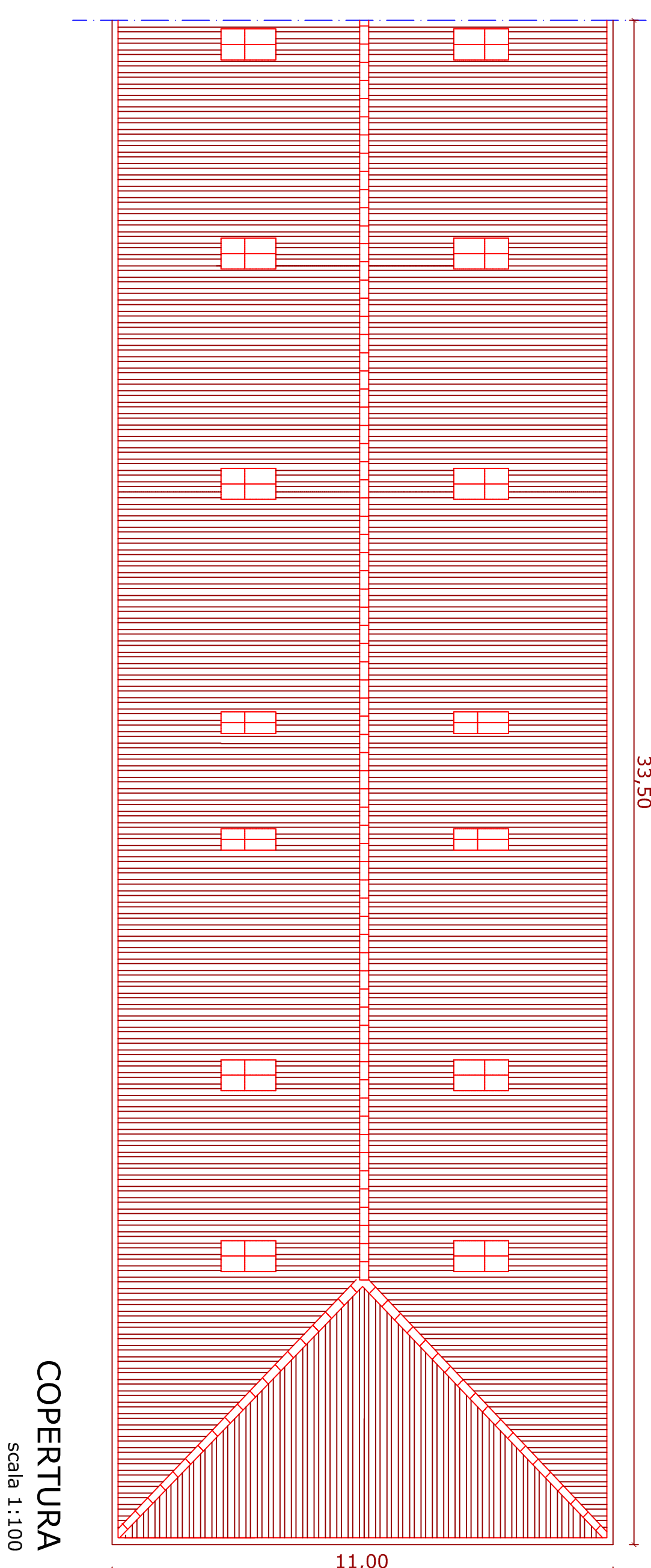
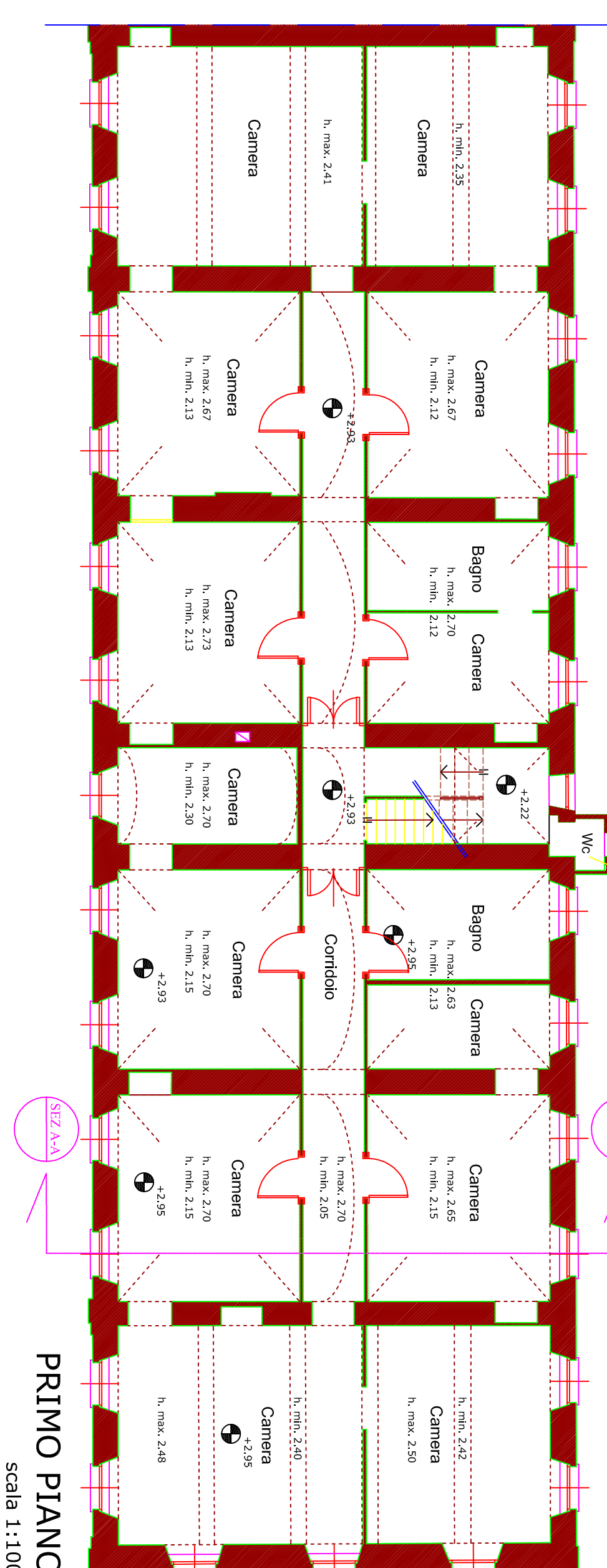
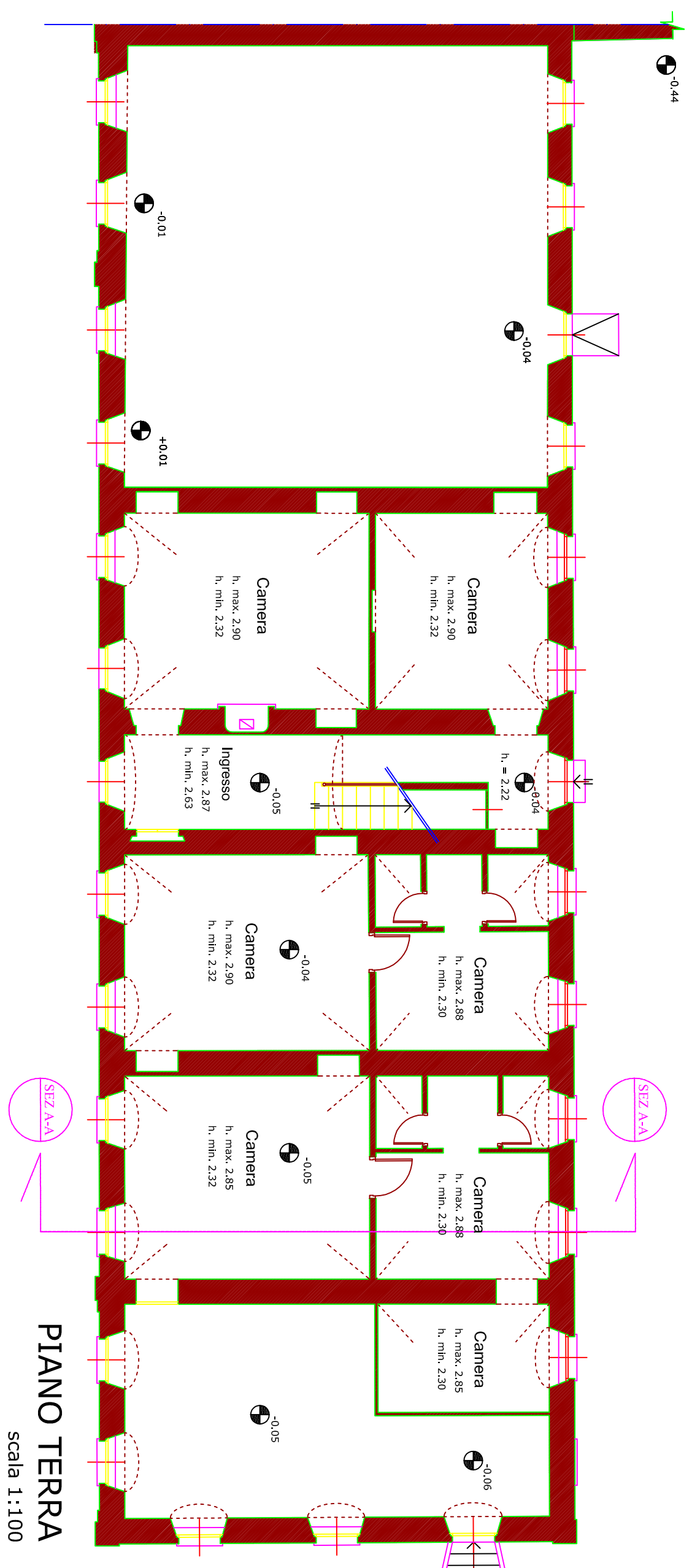
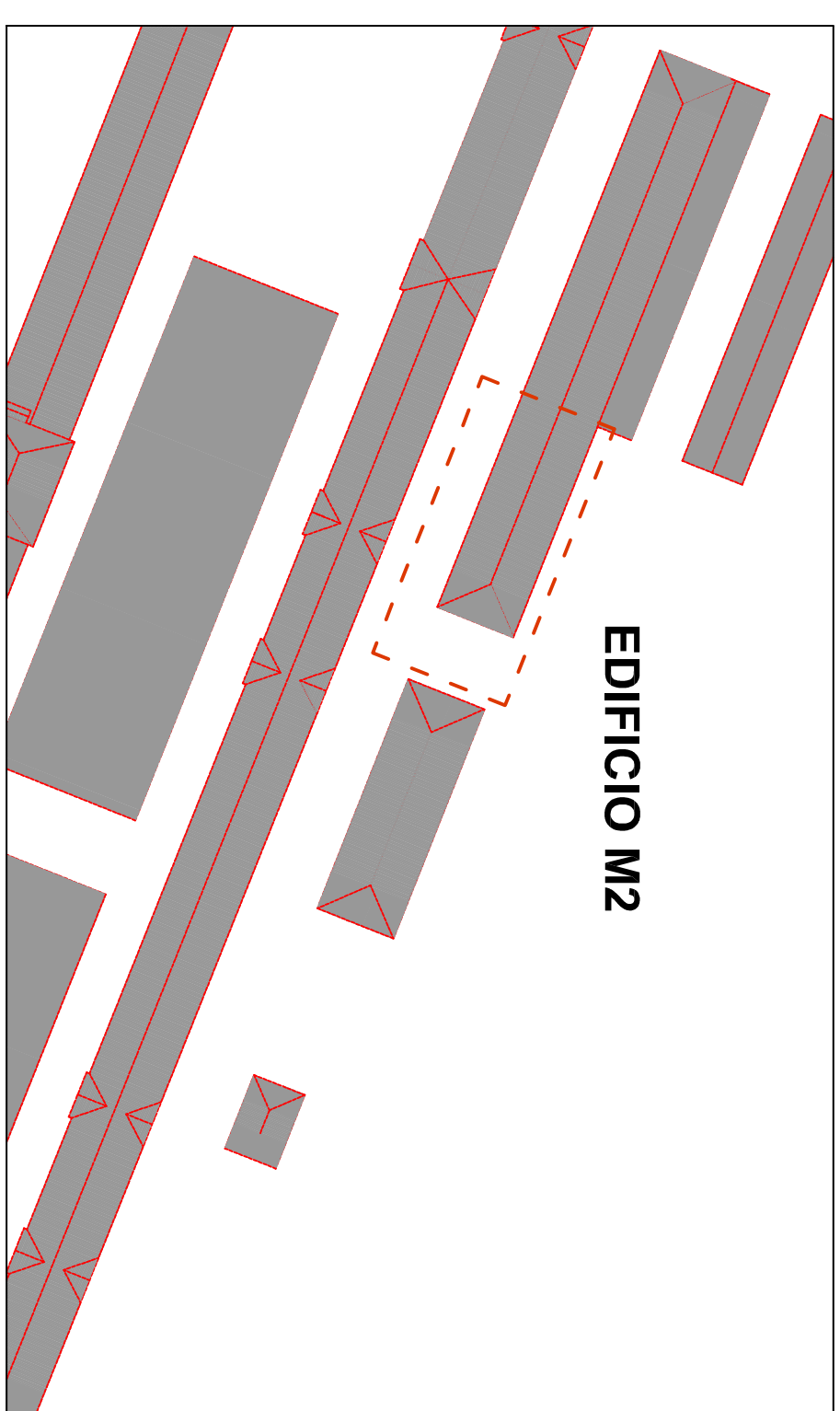
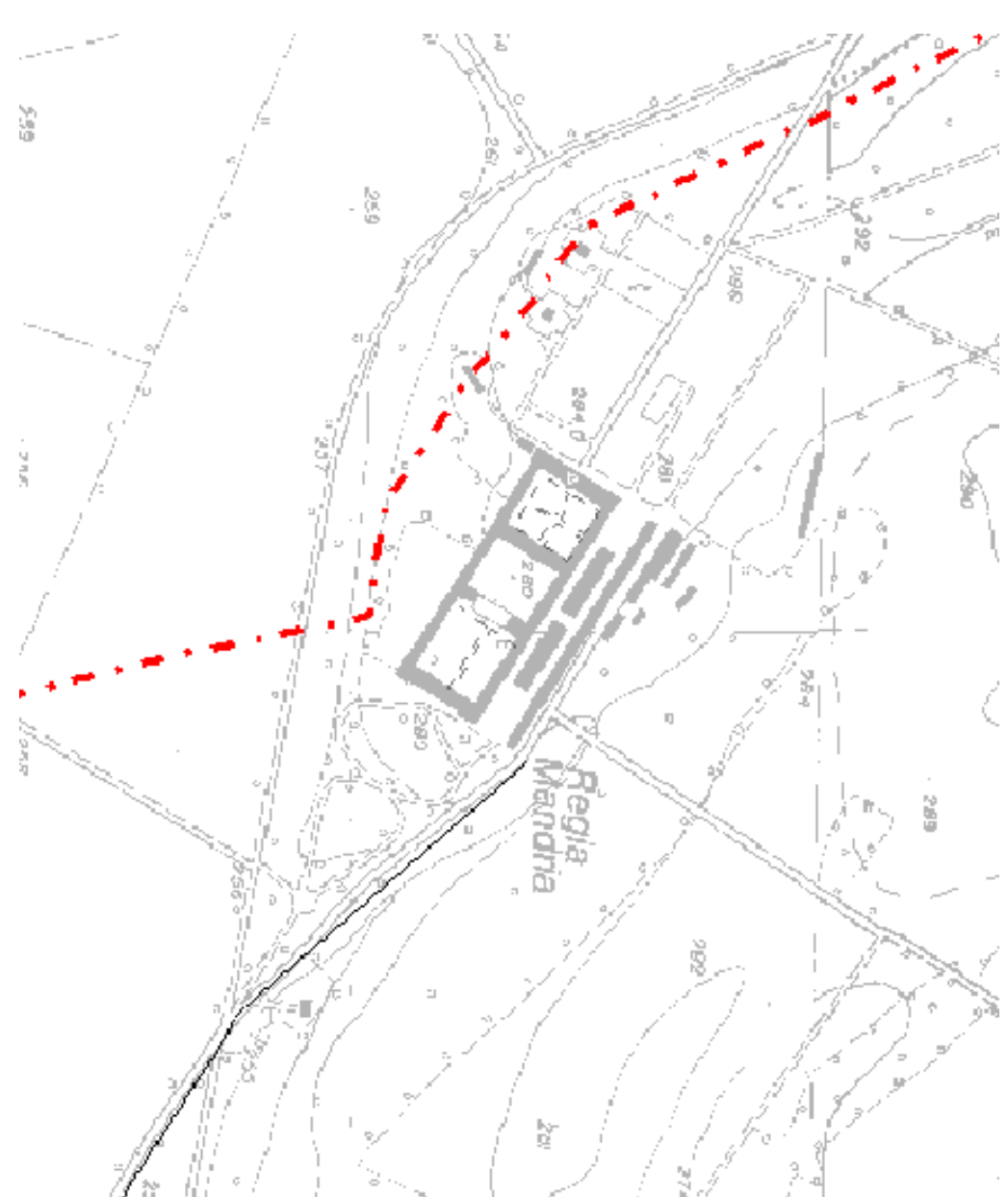




14	av	02	COMITATO LOCALI DIREZIONE REGIONALE E RISORSE UMANE E PATRIMONIO Via VIII, 8 - 10121 TORINO
SCALA	1:100/1:20/1:20		RESPONSABILE E UNICO DEL PROCEDIMENTO DIRETTORE - Dott.ssa Maria Grazia Ferrelli
DATA	OTTOBRE 2010		
REV.			

Geom. Giuliano Picchiardi



## L'INTERVENTO

Le operazioni di rifacimento e consolidamento della copertura previste per l'edificio M1 dovranno prevedere i seguenti interventi

- [illegible]

